



VIRGINIA ASPHALT ASSOCIATION

Air Regulations

Mack McGuffey

January 5, 2017



TROUTMAN SANDERS

ATLANTA BEIJING CHARLOTTE CHICAGO HONG KONG NEW YORK ORANGE COUNTY PORTLAND RALEIGH
RICHMOND SAN DIEGO SAN FRANCISCO SHANGHAI TYSONS CORNER VIRGINIA BEACH WASHINGTON, DC

AGENDA

- Overview of New Source Performance Standards
- Overview of Preconstruction Permitting Requirements
- EPA Guidance and Enforcement
- What is “RICE MACT”?
- What to Watch in 2017
- Questions?



New Source Performance Standards

- Section 111(b) of the Clean Air Act
- “Subpart I”: Only 4 provisions, 40 C.F.R. § 60.90 – 60.93

1. Applicability: hot mix asphalt constructed after 1973

dryers; systems for screening, handling, storing, and weighing hot aggregate; systems for loading, transferring, and storing mineral filler, systems for mixing hot mix asphalt; and loading, transfer, and storage systems associated with emission control systems

2. Definitions: “hot mix asphalt facility”

3. Particulate Matter Emission Standards:

- 90 mg/cm (0.04 gr/cf)
- 20% opacity

4. Test Methods and Procedures: Methods 5 & 9



New Source Performance Standards

- “Subpart UU”: Only 5 provisions, 40 C.F.R. § 60.90 – 60.93

- 1. Applicability:** asphalt processing and roofing plants constructed after 1980

each **saturator** and each **mineral handling and storage facility** at **asphalt roofing plants**; and each **asphalt storage tank** and each **blowing still** at **asphalt processing plants**, petroleum refineries, and asphalt roofing plants

- 2. Definitions:** 12 key terms (see bold terms above)

- 3. Particulate Matter Emission Standards:**

- Numerous standards & 20% opacity

- 4. Monitoring of operations:** temperature and controls

- 5. Test Methods and Procedures:** Methods 5 & 9



Preconstruction Permitting

Attainment Areas

- Prevention of Significant Deterioration (PSD)
- Only applies to “major sources” > 100 tpy potential-to-emit (PTE)
- Requires:
 1. Best cost-effective controls
 2. Modeling Analyses
 3. Time – 6 to 18 months
 4. Public process

Nonattainment Areas

- Nonattainment New Source Review (NNSR)
- Only applies to “major sources” but the PTE thresholds may vary
- Requires
 1. Best controls ever
 2. Emission Offsets
 3. Alternatives Analysis
 4. Time and public process



EPA Guidance

Q: If my plant is portable, is it still regulated as a “stationary source” of emissions?

A: Yes. ADI# 1003 (12/5/74)

Q: Do I count “fugitive emissions” in determining whether I am a “major source”?

**A: Yes, count all emissions, even those not emitted from a vent or stack, in determining whether you are a “major source.”
(6/9/1980)**



EPA Guidance

Q: Could increasing recycled asphalt product percentage triggered permitting or additional testing requirements?

A: Increasing RAP percentage can be considered an “operational change,” but is not expected to increase emissions, so no permitting or testing required. (5/18/95)

A quick note on EPA enforcement ...

- Four actions in the last ten years (two in 2006 and 2012)
- Penalties range from \$1000 to \$94,500



RICE MACT

- “Reciprocating Internal Combustion Engines” “Maximum Achievable Control Technology” Standards
- The most complicated rule for the smallest sources.
- Different standards apply depending on size of facility (area or major), engine fuel (diesel or gas), horsepower, 2-stroke or 4-stroke, lean or rich burn,
- The easy answer ... buy a good one.
 - Manufacturer certification will suffice IF:
 1. any size at an area source
 2. < 500 HP at a major source
 3. < 250 HP if 4SLB at major source



What to Watch in 2017

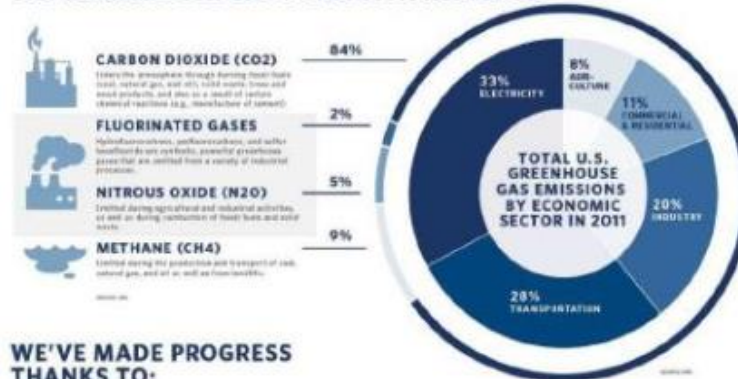


Why is the climate changing?

- [Basic Information](#)
- [Causes of Climate Change](#)
- [Future of Climate Change](#)
- [Greenhouse Gas Emissions](#)



U.S. GREENHOUSE GAS POLLUTION INCLUDES:



What can we do about this change?

- [Reducing Emissions](#)
- [Adapting to Change](#)
- [What EPA is Doing](#)
- [What You Can Do](#)

WE'VE MADE PROGRESS THANKS TO:



Questions?

