

PAVING INSPECTION POINTS

 Bryan Smith, P.E

3/10/2020 Regional Seminar

Read contract - know where to look for specifications

Not many specifications this year, still important to know contract requirements.

1. 2016 Spec Book
2. 2019 Supplemental Specifications (small quantity change)
www.virginiadot.org/business/resources/const/2019_Supplement_to_the_2016_Specifications.pdf
3. Special Provisions and Supplemental Specifications in contract

TACK APPLICATION



Check Tack Application

Before season, demonstrate correct application rate to VDOT

Daily check that all nozzles are spraying



Tack Placement

Continuously check for uniform tack spray

Consistent, full-coverage



2020 Spec Change - Non-Tracking Tack Requirement

Property	Test Method	Min	Max
Residue by Evaporation, %	AASHTO T59	50	
Viscosity, 77° F	AASHTO T59		150
Sieve (plant)	AASHTO T59		0.1%
Sieve (field)	AASHTO T59		0.3%
Penetration	AASHTO T49		50
Softening Point	AASHTO T 53	57° C	

Several field samples we have tested in recent years have not met 0.3% max

Could be related to storage and handling issues - Work with tack supplier to ensure best practices.

PAVER OPERATIONS



Paver Operations – Importance of Steady Pacing

- **Maintaining constant paver speed is important to getting a smooth mat and consistent thickness**
- **Paver stops can create bumps and low density areas**
 - **Pull forward and place joint if the wait will be long**
- **The speed of the entire operation should be tied together**
 - **Plant production, trucking, paver speed, roller speed**

Mix Temperature: Summary of Specifications

Mix Characteristic	Minimum Base Temperature	Minimum Laydown
Warm Mix	40	200
Base or Intermediate Mix	40	250 (or nomograph)
Surface Mix A	40	250 (or nomograph)
Surface Mix D and A mixes with >25% RAP	50	270 (or nomograph)
Surface Mix E	50	290 (or nomograph)

**Other restrictions for SMA, SM-4.75, and THMACO.
Check special provisions for requirements.**

Issues from cold weather paving



Paver Operations – Mat issues

Visually check for mat issues behind paver:

- Segregation
- Tearing

“The finished pavement shall be uniform and smooth” (315.05c)

- Contractor Level II Asphalt Field technician to correct any issues with placement operations (315.05(c))
- Engineer reject a portions if paved roadway is visually segregated or contaminated (211.08)

Mat issue along joint



Same road after rolling – issue apparent on mat



Proper paver set-up to prevent mat issues

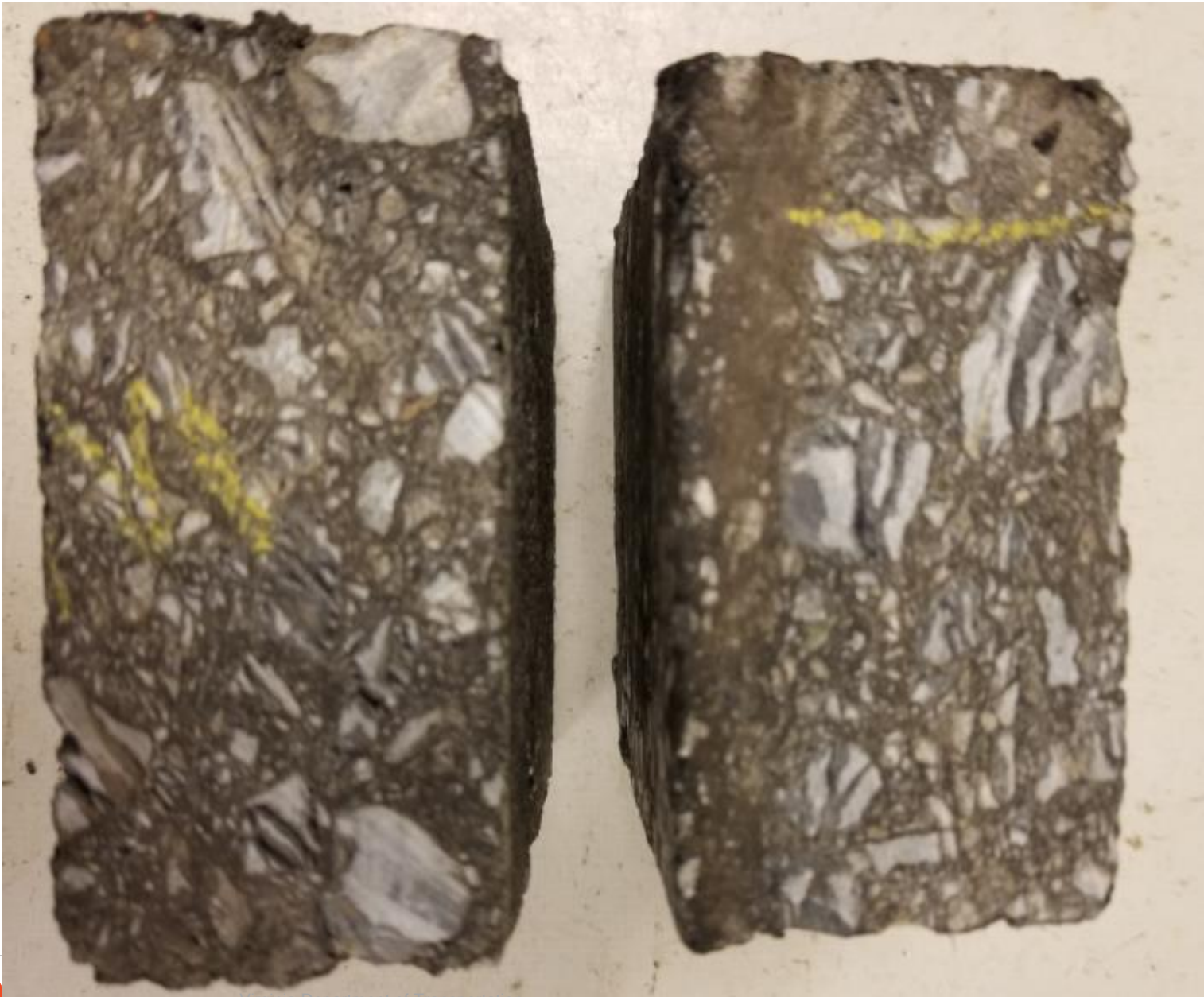


Longitudinal Joint Density

**Nuclear testing min
95% of control
strip target**

**Core at longitudinal
joint with 84.5%
density**





Breaking aggregate

Adjust roller pattern

**'EXCELLENCE IS NOT A SINGULAR ACT; IT'S A
HABIT. YOU ARE WHAT YOU REPEATEDLY DO.'**

QUALITY REQUIRES CONSISTENCY!

